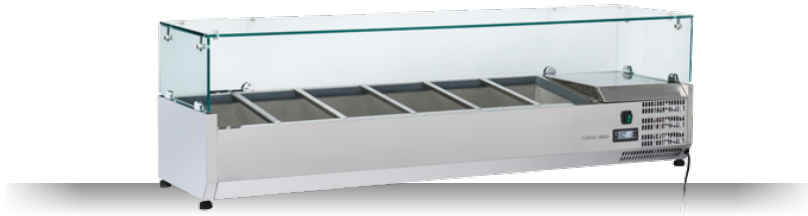
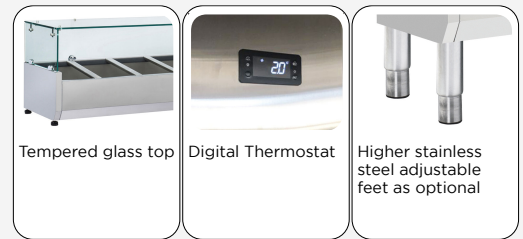




## DETAILS



## GENERAL FEATURES

- Refrigerated horizontale showcase (Pans GN1/3)
- Stainless Steel exterior and interior
- Static Cooling
- Automatic compressor cycle defrost
- Single copper pipe evaporator (No welding in the foaming)
- Digital Thermostat
- N.4 Adjustable feet
- Spacer set included
- GN1/3 Pans are not included with the unit
- Tempered glass top
- Energy efficiency class: -

## TECHNICAL SPECIFICATIONS

Capacity	<b>58 L</b>
Temperature	<b>+2° ~ +8°C</b>
Consumption	<b>1.5 kWh/24h</b>
Rated Power	<b>160 W</b>
Noise level	<b>56 dB(A)</b>
Net Weight	<b>46 Kg</b>
Gross Weight	<b>73 Kg</b>
External Dimensions (WxDxH mm)	<b>1500x395x440</b>
Internal Dimensions (WxDxH mm)	<b>1150x310x163</b>
Packaging dimensions (WxDxH mm)	<b>1640x465x460</b>
Loading quantities 20'/40'/40'HQ	<b>75/160/160</b>

## CERTIFICATION



## PRODUCT DIMENSIONS

