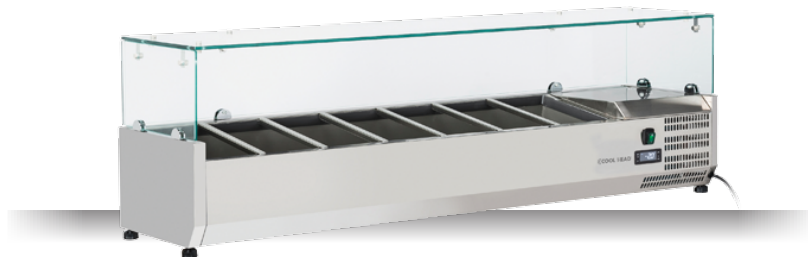




DETAILS



GENERAL FEATURES

- Refrigerated horizontale showcase (Pans GN1/4)
- Stainless Steel exterior and interior
- Static Cooling
- Automatic compressor cycle defrost
- Single copper pipe evaporator (No welding in the foaming)
- Digital Thermostat
- N.4 Adjustable feet
- Spacer set included
- GN1/4 Pans are not included with the unit
- Tempered glass top
- Energy efficiency class: -

TECHNICAL SPECIFICATIONS

Capacity	46 L
Temperature	+2° ~ +8°C
Consumption	1.5 kWh/24h
Rated Power	160 W
Noise level	56 dB(A)
Net Weight	42.5 Kg
Gross Weight	67 Kg
External Dimensions (WxDxH mm)	1500x335x440
Internal Dimensions (WxDxH mm)	1150x246x163
Packaging dimensions (WxDxH mm)	1630x405x445
Loading quantities 20'/40'/40'HQ	85/180/180

CERTIFICATION

CE  RoHS

PRODUCT DIMENSIONS

